

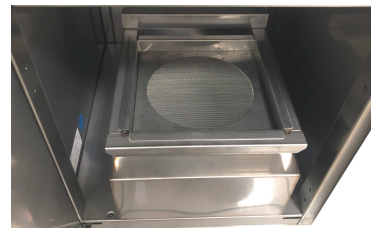
F13-554ET

110 2WAYSLOTUS ELECTRIC FRYERS

Electric Fryer 13 lts - Bowl cm. 24x35x32h - 1
basket cm. 21x30x12h. Sieve and lid for pan.
- Drip tray with sieve. Production: 10 kg/h



Construction - Fabricated using CrNi 18/10 AISI 304 grade Stainless Steel Scotch-Brite Satin polish Finish, incorporating 2 mm thick worktop, rounded edges, chromed details. Knobs with waterproof grades IPX5.
Model - Professional Electric Fryer on cabinet. With single tank to include both basket and lids, tank filter with basket support. Double Thermostat for operating and over heat safety. **Maintenance** - All serviceable parts are accessible by the easy removal of front control panel. Easy tank cleaning by rotating heating element. **Fittings** - Appliance is supplied with adjustable feet. Oil filter drain pan included.

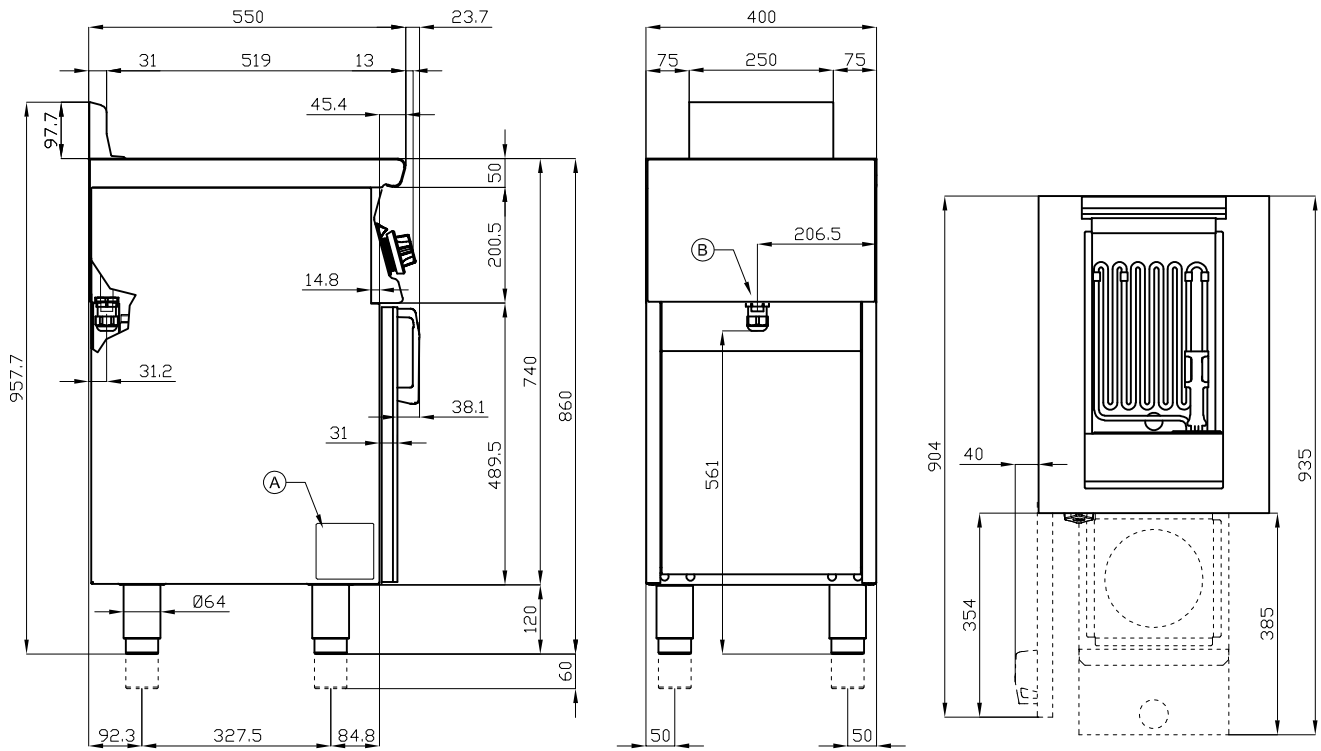


ITALIAN CULINARY ART

The pictures are purely representative. The manufacturer reserves the right to modify the technical data and models without previous notice.

F13-554ET

110 2WAYSLOTUS
ELECTRIC FRYERS



A	Data plate	B	Electrical connection
---	------------	---	-----------------------

MODEL: F13-554ET
 DIMENSIONS: cm. 40x 55x 90h
 ELECTRIC POWER: 10,95 kW
 VOLTAGE: 400V~3N
 FREQUENCY: 50/60 Hz



kg: 52
 m³: 0.368
 mm: 430x770x1110

BUY LOTUS BUY ITALY

The pictures are purely representative. The manufacturer reserves the right to modify the technical data and models without previous notice.



LOTUS S.P.A. Via Calmaor, 46
 31020 San Vendemiano(TV) - Italy
 Tel. + 39 0438 778020 / 778468
 Fax + 39 0438 778277
 www.lotuscookers.it - lotus@lotuscookers.it